

Titus+



Titus Slidix

A comprehensive range of innovative damping solutions for sliding door systems

- Consistent performance
- Comfortable door opening
- Fully controllable damping curve
- Quick development of custom solutions



Titus Slidix

A comprehensive range of damping solutions for applications in internal sliding door systems, wardrobes and refrigerators.

With hydraulic damping technology it offers a fully controllable damping curve, defining forces and their distribution very precisely over the whole damping action.

The damper's stroke assures efficient damping at any closing speed, providing consistent performance over any application from up to 120kg with smooth soft closing and reduced rebound.



Consistent performance on doors from up to 120 kg

- Consistent and reliable damping at any closing speed
- The door will close even at minimum speed



Comfortable opening

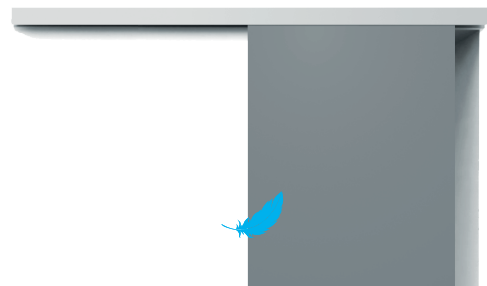
Effortless opening of doors





Fully controllable damping curve

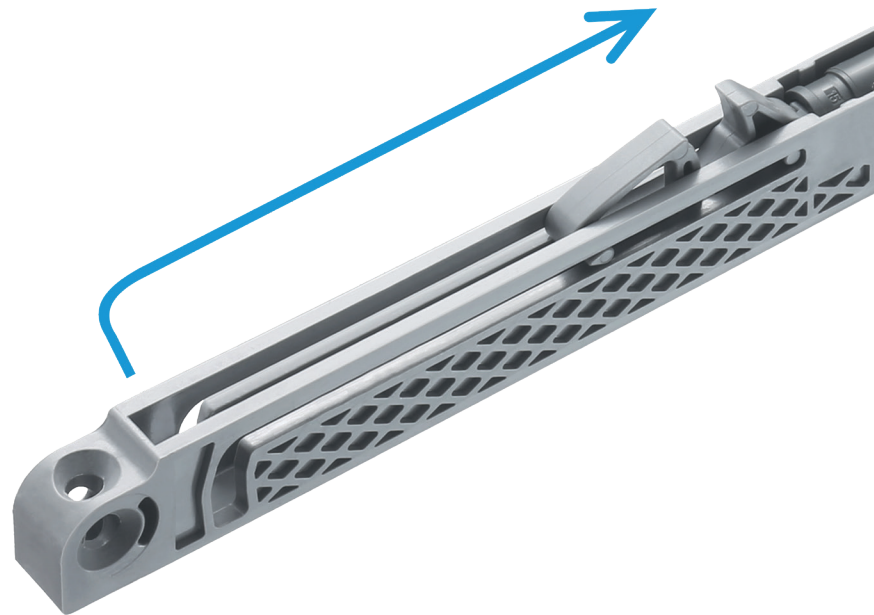
- Ability to fine tune performance to specific applications
- Smooth and even soft closing action on various door dimensions and weights
- Closing is smooth and soft at the last stage of damping which results in silent closing without a rebound



Quick development of custom solutions

- Slidix can be easily customized to meet specific customer requirements for weight, friction and speed
- Its compact design can accommodate dampers of various forces and strokes
- It reliably performs in temperature as low as -30°C

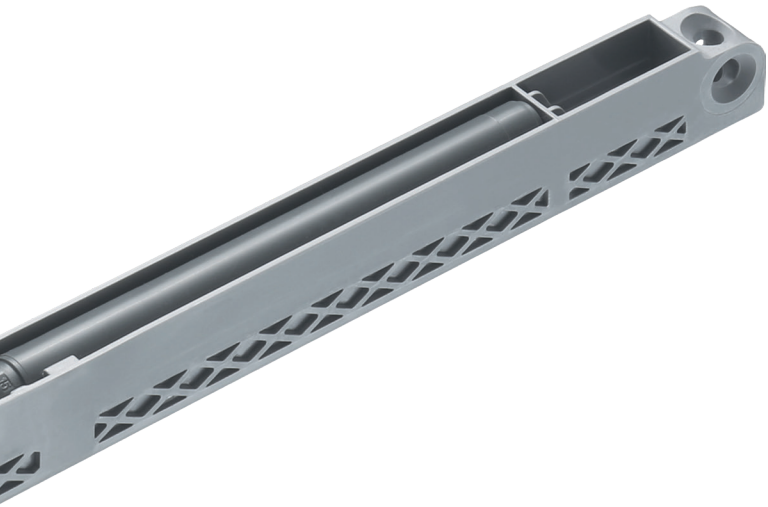
Damper stroke
50mm, 100mm



Characteristics

Flat, ART*

* Adaptive Response Technology (ART) allows the damper to adapt to weight and closing speed of object and adjusts the damping force accordingly. Dampers with ART function cover a wide damping range, while still maintaining low opening force.



Load
Up to 120kg

Temperatures
-30 °C to +85 °C
(-22°F to +185°F)



Titus hydraulic damping technology

Titus Slidix products features Titus damper inside, our proprietary multipurpose damping technology. It ensures **force and performance consistency, and a fully controllable damping action.**



Operating temperature range

-30°C to +85°C

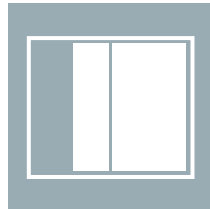
(-22°F to +185°F)

Wide range of applications

Furniture



Wardrobes with 3 or more doors

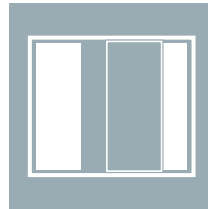


2-door cabinets



Walk-in closets

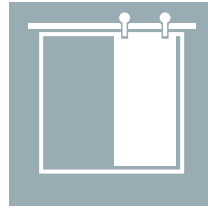
Interior sliding doors



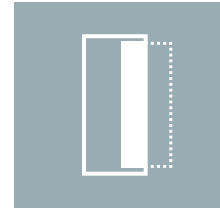
Sliding doors



Wall partitions

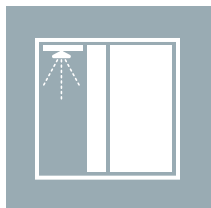


Barn doors



Pocket doors

Bathroom

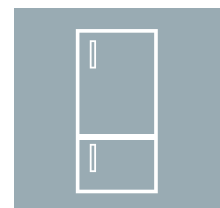


Shower doors

Home appliances

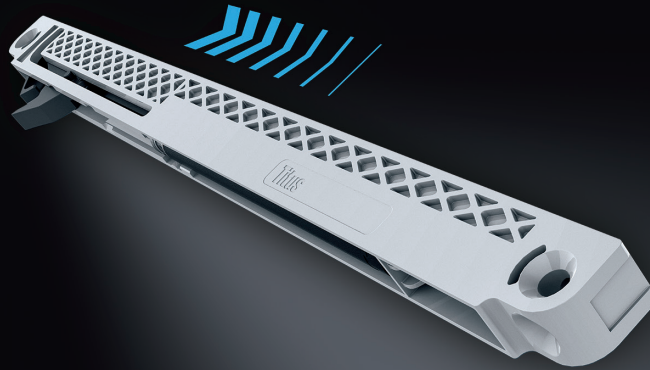


Winecooler

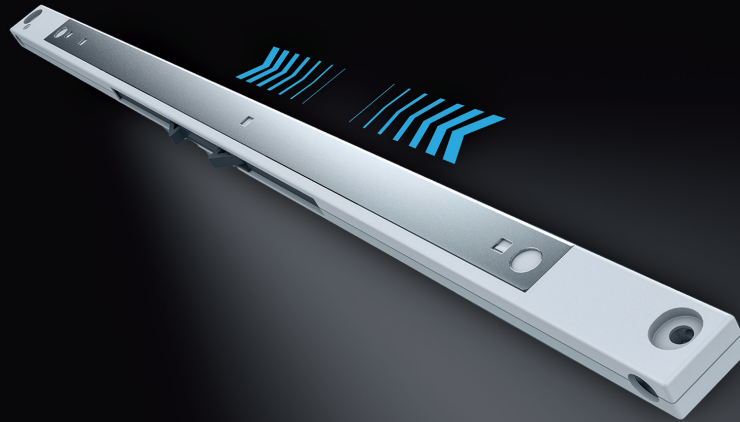


Refrigerator

Technical characteristics



Product	Slidix Solo 50	Slidix Solo 50-R	Slidix Solo 100
Damping stroke (mm)	50	50	100
Load capacity (kg)	15-80	15-80	40-120
Housing length (mm)	237	298	370
Drilling pattern (mm)	224	288	352



Slidix Duo 50	Slidix Duo 100	Slidix Centro
50	100	50
15-80	40-120	15-40
237	403	465
224	384	448

Titus+

Titus Group / titusplus.com

